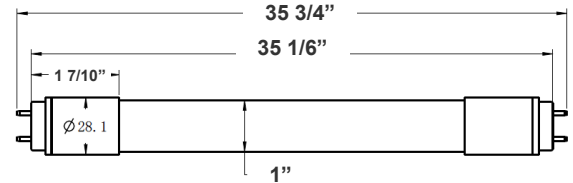
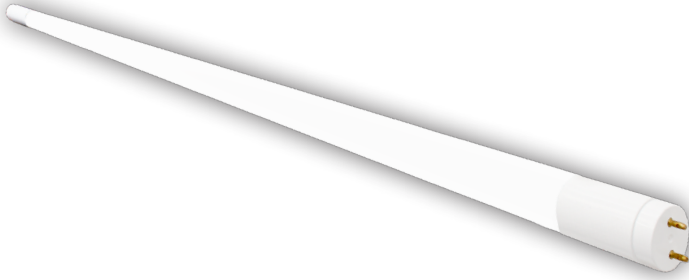


T8 SERIES COMMERCIAL INDOOR LIGHTING



T8-EZ6-GS-3FT-12W-40K-F
T8-EZ6-GS-3FT-12W-50K-F

Customer Name: _____
Project Name: _____
Note: _____ | Type: _____



35 3/4"(L) X 1" (D)

Crystal Glass T8 Tube switches from fluorescent tubes to LED, giving more cost efficiency by providing the same amount of lumen output with less energy consumption. Type B single end and Type A+B are designed for different retrofit projects. 350° beam angle glass The LED tube offers a soft and bright light distribution. Stable quality out of mass automated production.

Features

- Type A + B (Dual UL)
- Type A: With Existing Ballast - UL No. E366061
- Type B: Ballast Override (AC Direct), Connect One End or Both Ends (Dual Function) - UL No. E342884
- 5-Year Warranty
- Glass Lens

Technical Specifications

Electrical:

- Voltage: 120-277V; 50/60Hz AC
- Power Factor: >0.90
- THD: <20%
- Wattage: 12W
- Efficacy: 133 LPW

Mechanical:

- Base Type: G13
- Glass Tube: With Shatter-Proof Film
- Frosted Lens
- Ambient Operating Temperature: -13°F to 113°F
- IP Rating: IP20 (Indoor)

Lighting:

- Dimming: Non Dimmable
- Total Lumens: 1560LM
- Color Temperatures: 4000K/5000K
- Color Rendering Index: CRI ≥ 80
- Beam Angle: 320°
- Rated life: 50,000 hrs

Applications:

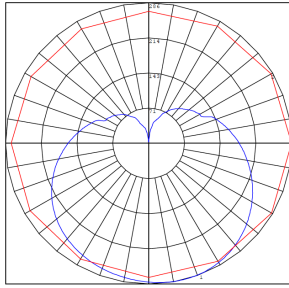
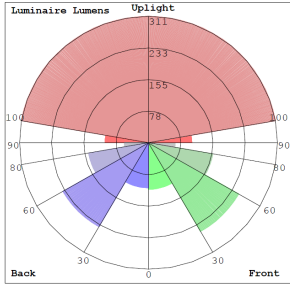
- Direct Fit 4 T8 LED tubes do not burn out easily and provide bright and even lighting to schools, office spaces, retail stores and storage rooms.

Other Models:

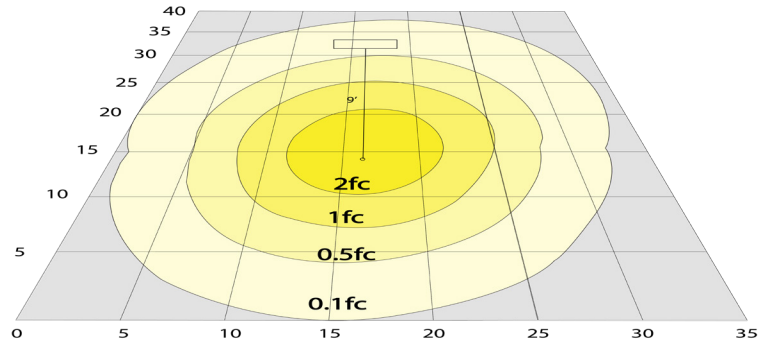
- 10W | 1200LM | T8-EZ6-GS-2FT-10W-30K-F
- 10W | 1200LM | T8-EZ6-GS-2FT-10W-35K-F
- 10W | 1200LM | T8-EZ6-GS-2FT-10W-40K-F
- 10W | 1200LM | T8-EZ6-GS-2FT-10W-50K-F
- 15W | 1800LM | T8-EZ6-GS-4FT-15W-30K-F
- 15W | 1800LM | T8-EZ6-GS-4FT-15W-35K-F
- 15W | 1800LM | T8-EZ6-GS-4FT-15W-40K-F
- 15W | 1800LM | T8-EZ6-GS-4FT-15W-50K-F
- 18W | 2160LM | T8-EZ6-GS-4FT-18W-30K-F
- 18W | 2160LM | T8-EZ6-GS-4FT-18W-35K-F
- 18W | 2160LM | T8-EZ6-GS-4FT-18W-40K-F
- 18W | 2160LM | T8-EZ6-GS-4FT-18W-50K-F



Photometrics: T8-EZ6-GS-3FT-12W

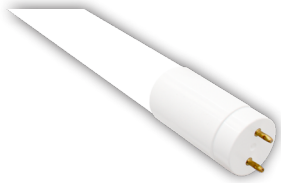


BUG Rating: B1-U3-G1

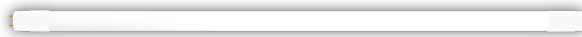


Simulation based on 5000K, Area 40'x 35' Mounting Height: 9'

Other Views:



Close-up View



Front View



Socket View

Performance Table: T8-EZ6-GS-3FT-12W

MODEL NO.	Wattage	Voltage	Lumens	Color Temp.	BUG Rating	LPW
T8-EZ6-GS-3FT-12W-40K-F	12W	120-277V	1560LM	4000K	B1-U3-G1	130
T8-EZ6-GS-3FT-12W-50K-F	12W	120-277V	1560LM	5000K	B1-U3-G1	130

Sample Ordering

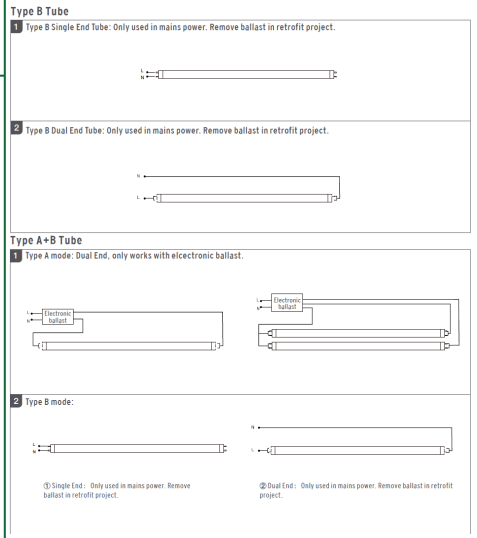
Model **Material** **Size** **Watt** **Color Temp.** **Lens Type**
 T8 - EZ6 - GS - 3FT - 12W - - F

40K = 4000K
 50K = 5000K

Example:

1. T8-EZ6-GS-3FT-12W-40K-F (FOR 12W 4000K T8 3FT TUBE LAMP 120-277V)

WIRING DIAGRAM:



Other Models: T8-EZ6-GS-3FT-12W-C (Clear Lens)



Close-up View



Front View



Socket View